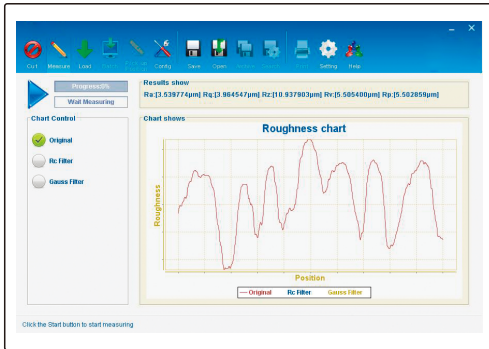


SR200

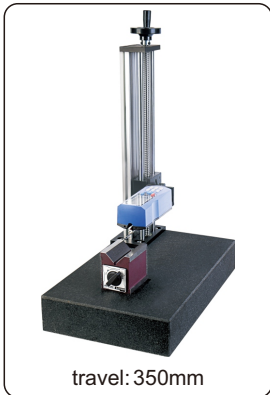
ROUGHNESS TESTER



- ◆ 21 roughness parameters
- ◆ With probe position indicator
- ◆ Roughness values, profile, and curve can be shown on the display
- ◆ Memory of maximum 100 results
- ◆ With a mini SD card slot, can save the result into SD card
- ◆ Automatic power off
- ◆ With manufacturer inspection certificate

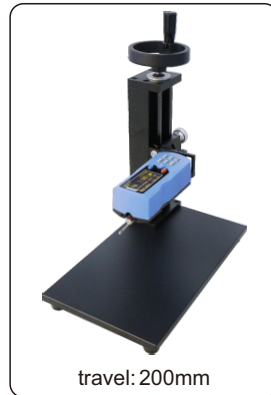


Measuring software



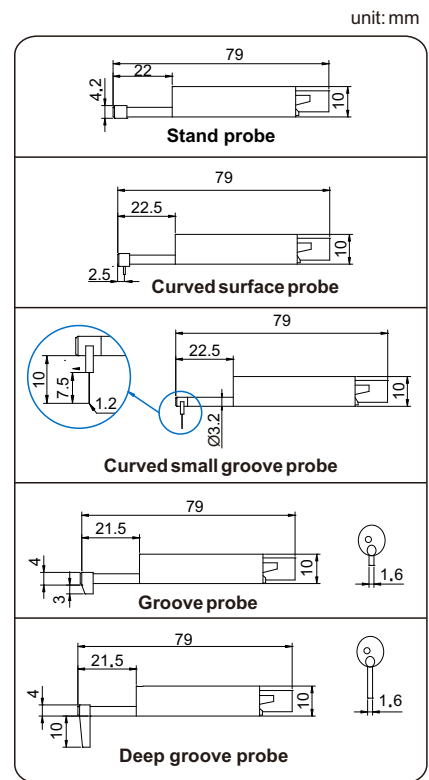
travel: 350mm

Heavy duty test stand SR200-STD (optional)



travel: 200mm

Light duty test stand SR200-STD1 (optional)



SPECIFICATION

| | | |
|--------------------|---|-----------|
| Parameters | Ra, Rz, Rq, Rp, Ry, Rv, Rs, R3z, R3y, Rt, Rmax, Rk, Rku, Rsm, Rpc, Rpk, Rvk, Rsk, Mr1, Mr2, Rz(JIS) | |
| Range (Z axis) | ±80μm | |
| Accuracy | ±10% | |
| Resolution (Ra) | 0.001μm | |
| Probe | type | inductive |
| | stylus radius/angle | 5μm/90° |
| | stylus material | diamond |
| Measuring force | 4mN | |
| Measuring unit | μm/μin | |
| Cut off | 0.25/0.8/2.5mm | |
| Number of cut-offs | 1-5 | |
| Traverse speed | 0.5mm/s, 1mm/s | |
| Memory | 100 measurement results | |
| Output | USB | |
| Power | built-in rechargeable battery | |
| Dimension(L×W×H) | 140×58×48mm | |
| Weight | 440g | |

INCLUDED ACCESSORIES

| | |
|------------------------|-----|
| Main unit | 1pc |
| Standard probe | 1pc |
| Calibration block | 1pc |
| Calibration support | 1pc |
| Adjustable stand | 1pc |
| Probe cover | 1pc |
| USB cable and software | 1pc |
| AC/DC adapter | 1pc |
| Software | 1pc |

OPTIONAL ACCESSORIES

| | |
|---------------------------|------------|
| Extension rod | SR200-ER |
| Curved surface probe | SR200-02 |
| Groove probe | SR200-03 |
| Deep groove probe | SR200-04 |
| Curved small groove probe | SR200-05 |
| Heavy duty test stand | SR200-STD |
| Light duty test stand | SR200-STD1 |
| Printer | SR200-PR |

* NEW