

SERIES 230

DIAL INDICATOR

- ◆ Supplied with limit pointers and bezel clamp

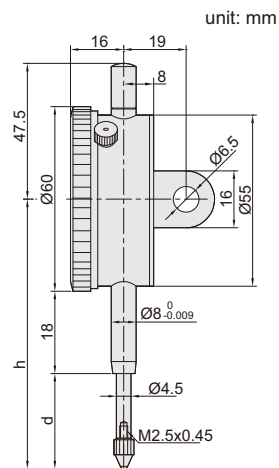
Styli (optional)



Application



230-030-11



Code	Range	Graduation	Accuracy(fges)	Hysteresis(fu)	Range/rev	Dial reading	Remark	h	d
230-010-11	10mm	0.1mm	40µm	20µm	10mm	0-10mm	lug back	70	20
230-025-11	25mm	0.1mm	60µm	20µm	10mm	0-10mm	lug back	85	35
230-030-11	30mm	0.1mm	60µm	20µm	10mm	0-10mm	lug back	90	40