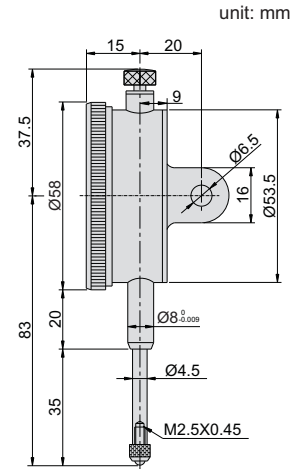


- ◆ Graduation: 0.01mm
- ◆ Reverse reading
- ◆ With limit hands
- ◆ Rang per revolution: 1mm
- ◆ Supplied with lug and flat back

Styli **(optional)**

Application



Code	Range	Accuracy	Hysteresis	Scale
292-030-I	30mm	35µm	7µm	0-100