

# ULTRASONIC THICKNESS GAGE (FOR THIN WORKPIECES) CODE ISU-700D

DATA  
OUTPUT

WITH A AND B SCAN

## SPECIFICATION(ON STEEL)

Measuring range		Transmit-echo (T-E) mode: 1.5~20mm Echo-echo (E-E) mode: 0.2~10mm
Measuring unit		mm/inch
Resolution		0.1/0.01/0.001mm
Accuracy		$\pm 0.04\text{mm}$ ( $H < 9.99\text{mm}$ ) $\pm (0.04 + 0.1\%H)\text{mm}$ ( $H \geq 10\text{mm}$ ) H is the thickness to be measured in mm
Transducer	Type	Monocrystal probe
	Frequency	15.0MHz
	Diameter ( $\phi$ d)	7.5mm
Display		320×240, color screen display
Velocity		1000~9999m/s
Measuring frequency		2 times/second and 10 times/second
Applicable temperature		-20~50°C
Output		USB
Power supply		2×1.5V AA batteries
Dimension		133×75×29mm
Weight		260g (including batteries)

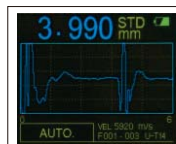
## STANDARD DELIVERY

Main unit	1 pc
Transducer	1 pc
Transducer protective sleeve	1 pc
Battery (AA)	2 pcs
Couplant	1 bottle
USB cable	1 pc

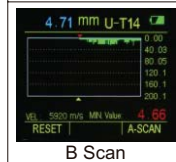
transducer protection  
sleeve (included)



couplant (included)



A Scan



B Scan

- For thin workpieces
- A scan, through the waveform, judges whether there are impurities, pores, cracks and so on inside, in order to avoid wrong measurement
- B scan, measures continuously, displays the thickness change on the screen
- Transducers can be automatically identified and zeroed
- Memory 10000 measurement values
- Data can be input to Excel and Word as keyboard signal
- Automatic or manual measurement
- When transducers are removed from workpieces, the measurement data are held on screen for easy viewing
- Set upper and lower limits for alarm when out-of-tolerance
- Automatic power off