

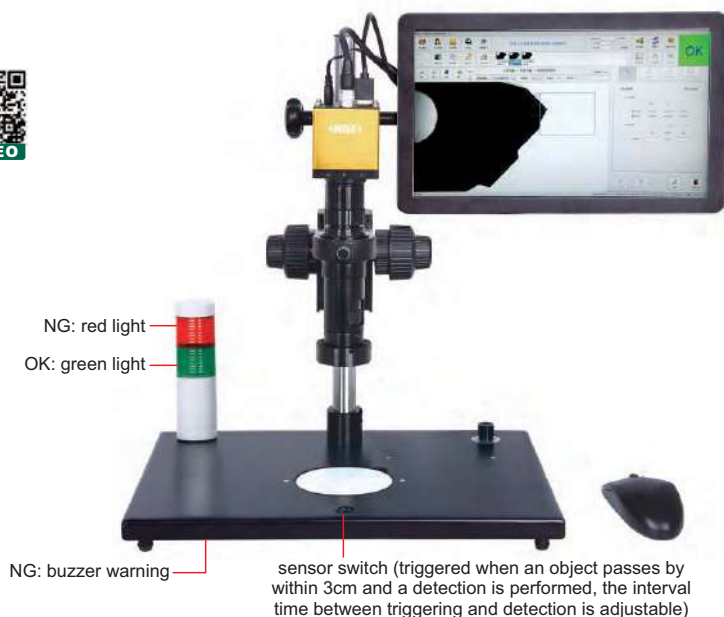
SMART MICROSCOPE CODE ISM-DL400**

**AUTOMATICALLY LOCATE WORKPIECES
REGARDLESS OF POSITION AND DIRECTION**

**BUILT-IN SOFTWARE
WITHOUT COMPUTER**



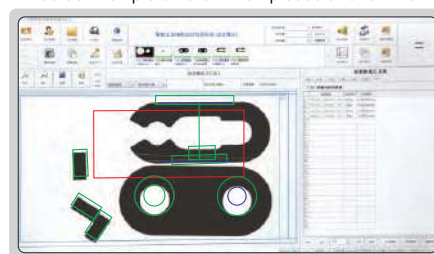
VIDEO



camera function

- surface defect detection
- dimension measurement
- read barcode
- burr detection
- contour matching
- character recognition
- color detection
- read QR code
- object counting
- thread measurement

detect multiple different workpieces at one time



- Automatically identify different workpieces
- Automatically locate workpieces regardless of position and direction
- Built-in software, PLC control input and output interface
- Including multiple detection tools
- Automatically calculate, store the test results and export to Excel

Tool No.	Tool Name	Tool Type	Tool Status	Tool Location	Tool Size	Tool Weight	Tool Material	Tool Color	Tool Shape	Tool Function	Tool Usage	Tool Maintenance	Tool Remarks
1001	Tool A	1001	OK	1001	1001	1001	1001	1001	1001	1001	1001	1001	1001
1002	Tool B	1002	OK	1002	1002	1002	1002	1002	1002	1002	1002	1002	1002
1003	Tool C	1003	OK	1003	1003	1003	1003	1003	1003	1003	1003	1003	1003
1004	Tool D	1004	OK	1004	1004	1004	1004	1004	1004	1004	1004	1004	1004
1005	Tool E	1005	OK	1005	1005	1005	1005	1005	1005	1005	1005	1005	1005

report showing the perform times of each tool, quantity of OK and NG, the report can be saved

Tool No.	Tool Name	Tool Type	Tool Status	Tool Location	Tool Size	Tool Weight	Tool Material	Tool Color	Tool Shape	Tool Function	Tool Usage	Tool Maintenance	Tool Remarks
1001	Tool A	1001	OK	1001	1001	1001	1001	1001	1001	1001	1001	1001	1001
1002	Tool B	1002	OK	1002	1002	1002	1002	1002	1002	1002	1002	1002	1002
1003	Tool C	1003	OK	1003	1003	1003	1003	1003	1003	1003	1003	1003	1003
1004	Tool D	1004	OK	1004	1004	1004	1004	1004	1004	1004	1004	1004	1004
1005	Tool E	1005	OK	1005	1005	1005	1005	1005	1005	1005	1005	1005	1005

report of each detection is automatically created and saved

SPECIFICATION

Magnification	15X~100X
Resolution	1920×1080
Pixel	2M
Single pixel size	3.75×3.75μm
Frame rate	60fps
Sensor	1/2" CMOS
Chip structure	FPGA+ARM
Operating system	Linux 3.10
Power supply	220V, 50/60Hz **
Dimension (L×W×H)	570×300×430mm
Weight	6.5kg

** Add "-U" on code No. when power supply is 110V, 50/60Hz

STANDARD DELIVERY

Main unit	1 pc
0.5X camera adapter	1 pc
1X auxiliary objective	1 pc
Calibration plate	1 pc
16G USB flash disk	1 pc
White/black plate	1 pc
HDMI cable	1 pc
Power adapter	2 pcs

MAGNIFICATION, FOCUS DISTANCE AND VIEW FIELD

Auxiliary objective	Specification	Camera adapter	
		0.5X (included)	1X (optional)
1X (included)	Magnification	15~100X	30~200X
	Focus distance	70±2mm	70±2mm
	View field	16×11~2.5×1.6mm	7.8×5.3~1.2×0.8mm
2X (optional)	Magnification	30~200X	60~400X
	Focus distance	29±2mm	29±2mm
	View field	7.8×5.3~1.2×0.8mm	3.8×2.7~0.6×0.4mm

OPTIONAL ACCESSORY

1X camera adapter	ISM-DL-CA1X
2X auxiliary objective	ISM-DL-OB2X
LED auxiliary illumination	ISM-DL-LED
Coaxial light illumination	ISM-DL-COAXIAL
Auxiliary objective	page 258

To be continued